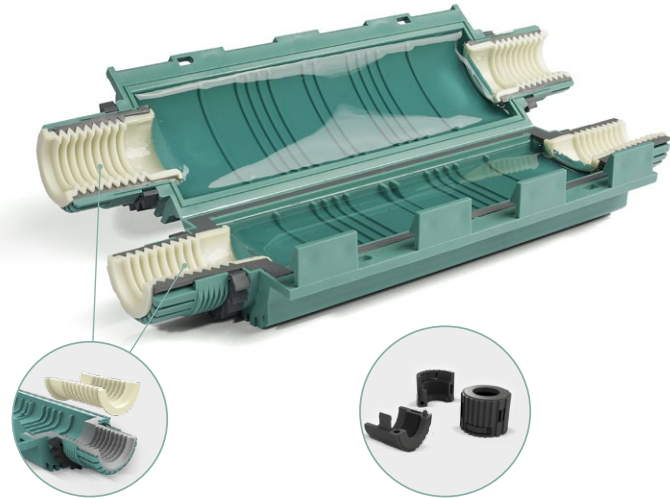


RELICON Reliseal Gel cable joints

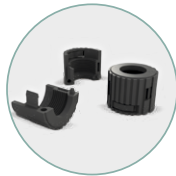
Safety locking mechanism

Prevents by accident loosening of the patented cable gland without an additional work step. The cable gland and joint can only be opened with the aid of a screwdriver.



Adapter seal

Functional divided seal made of EPR for the optimal sealing. Even for small cable cross-sections with a small outer cable diameter.



Cable gland system

Ensures optimal sealing and strain relief: the system consists of two halves so that it can also be applied after assembly.

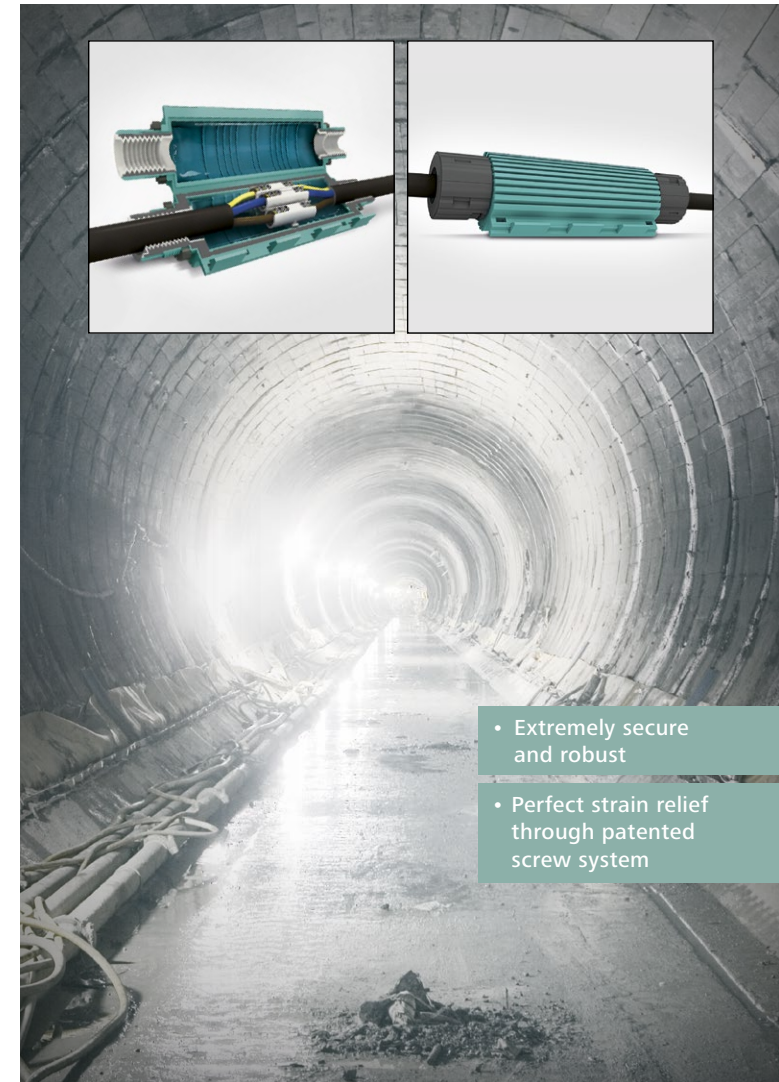
HellermannTyton
www.HellermannTyton.com

RELICON by
HellermannTyton

RELICON Reliseal Gel cable joints:

the innovative joint for the
most extreme demands.

IP68



- Extremely secure and robust
- Perfect strain relief through patented screw system

Simply practical

Reliseal gel cable joints are universal straight-through joints for reliable straight-through connections between polymeric cables like e. g. PVC, PE, EPR and XLPE.

Tested quality

Protection class IP68, 10 m
EN 60529:1991

IP68

SVHC
free

REACH
1907/2007

RoHS
2002/95/EC

RELICON
The Reliable Connection

RELICON is a **HellermannTyton** brand

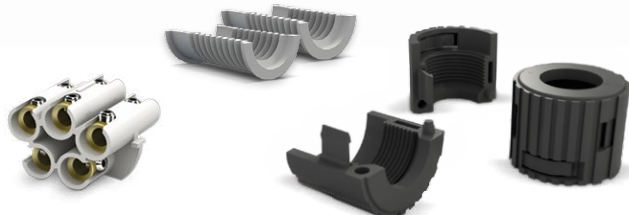
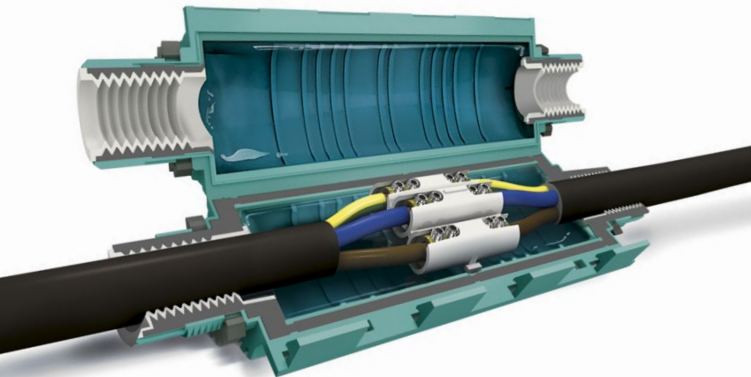


RELICON Reliseal Gel cable joints: your partner for the most extreme demands.



RELICON Reliseal gel cable joints consist of a robust polypropylene shell filled with RELICON gel – suitable for cable connections under the most extreme conditions, over and underground.

RELICON Reliseal fulfils the highest requirements for electrical installations and **offers mechanical protection, insulation and sealing in one work step**. The installer saves time and requires no special installation tools. RELICON Reliseal gel cable joints are temperature-resistant up to 90 °C as well as non-toxic and have an unlimited shelf life.



Many advantages – one solution: RELICON Reliseal

Simple, quick and reliable

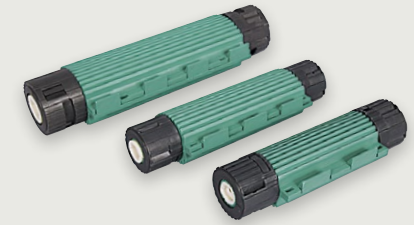
- Perfect strain relief through patented cable gland system
- Simple assembly – no special tools necessary
- Non-toxic gel
- Re-openable shell
- Connector block included

Features

- High insulation properties > 1 kV from RELICON gel
- Voltage class up to 450 V, 25 A
- UV-resistant
- Resistant to ageing
- Weather-resistant
- Temperature-resistant from -20 °C to 90 °C
- Unlimited shelf life
- Certified according to EN 60529:1991

Areas of application

- Outdoors
- Underground
- Underwater
- Interior spaces
- Installation channels
- Public power supply
- Road and tunnel lighting
- Building services
- Industry



The revolution in gel cable joints is available in 3 sizes.

RELICON Reliseal gel cable joints are available in 3 sizes – for all common conductor cross-sections from 3 x 2.5 mm² to 5 x 25 mm².

Reliseal V 56

Type	Cable diameter
	mm (from-to)
Reliseal V 56	12 - 18



Conductor cross-section in mm ²		Joint dimensions	Article-No.
from	to max.	mm (L x W x H)	
3 x 2,5	5 x 6	190 x 60 x 47	435-01660

Reliseal V 510

Type	Cable diameter
	mm (from-to)
Reliseal V 510	14 - 21



Conductor cross-section in mm ²		Joint dimensions	Article-No.
from	to max.	mm (L x W x H)	
3 x 4	5 x 10	235 x 69 x 49	435-01661

Reliseal V 525

Type	Cable diameter
	mm (from-to)
Reliseal V 525	20 - 30



Conductor cross-section in mm ²		Joint dimensions	Article-No.
from	to max.	mm (L x W x H)	
3 x 10	5 x 25	310 x 88 x 60	435-01662