



## 6.0 Connectorised Closures

### 6.1 Connectorised Closures

FDN AB Length with 48 LC/SC Adaptors and Basket	122
FDN AB Length with 48 LC/SC Adaptors	123
FRBU B Length with 24 SC Simplex Adaptors	124
FST 13 Port with 2 SC Duplex Adaptors	125

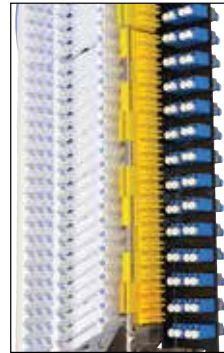


## Range of Options, to Suit Customers' Requirements...



### Connector Plate

The connector plate can take a variety of fibre connectors including LC Duplex and SC Simplex in the FDN and FRBU closures and LC Quad or SC Duplex in the FST closure. PC adaptors supplied as standard, APC adaptors available on request.



### Optional Loop Storage Basket

The connectorised FDN closure can be supplied with a loop storage basket, providing a protective area for fibre to be stored for loop through applications.



### LC and SC Pigtails

Fibre pigtails from HellermannTyton can be supplied in both LC and SC format. The pigtails are fed onto the tray and secured using Tubefix. Once on the tray the pigtail can be spliced to the incoming fibre.



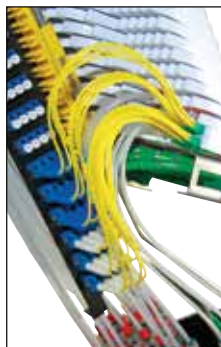
### Connector/Customer ID Markers

Cable markers provide clear identification to the engineer as to which fibre connects with each customer. This helps speed up fault finding and customer connection/disconnection.



### Splitter Tray Options

HellermannTyton offer the option of a splitter tray, allowing for multiple connection/customers to be serviced from a single incoming fibre.



### Protective Metal Casing

The FDN and FRBU closures are supplied with easily removable protective back plates. The plates are curved in shape to protect all connectors and their fibre cables, ensuring optimum performance.



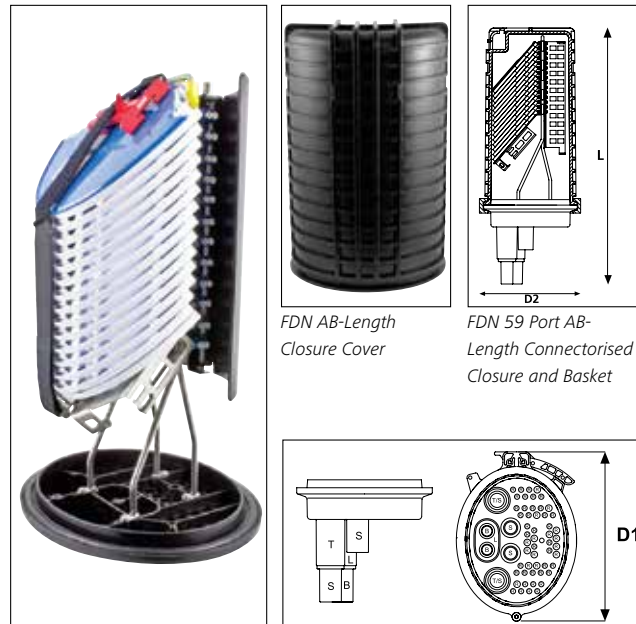


## FDN Connectorised Closure

### AB Length with 24 LC/SC Adaptors and Basket

#### Features and Benefits

- Maximum 180 fibre splice capacity
- 58 round ports and 1 oval port
- Fibre storage basket for loop through applications
- Hellipse NZDF SE-A trays
- LC Duplex or SC Simplex adaptors
- Maximum 12 splices per tray without double stacking
- Splitter accommodation
- Cablelok compatible for all port sizes
- Quick release cover
- Optional flash test valve and/or grounding feed-through



FDN 59 Port AB-Length Connectorised Closure with 48 LC or 24 SC ports and Basket

FDN 59 Port Base Port Configuration

#### Technical Description

The FDN AB Length closure with basket is supplied with a Polypropylene base. The base configuration of 58 round ports and 1 oval port covers a cable diameter range of 1.7 – 29.0mm when using Cablelok mechanical seals and 6.0 – 35.0mm when using heatshrink.

The mounting system is manufactured from Grade 304 stainless steel and can accommodate up to 15 Hellipse NZDF SE-A trays with a maximum of 24 LC Duplex or 24 SC Simplex adaptors mounted in the

connector plate for a maximum of 48 LC or 24 SC connectors.

The connectorised closure and the position of the mounting system allow for ease of access and traceability of the fibre on to the trays and the basket provides storage space for the storage of fibre loops.

The trays are white which makes it easy to see the colour of the fibre elements as they are routed through the fibre management system.

TYPE	Width D1 (mm)	Width D2 (mm)	Length L (mm)	Base Type	Tray Type	Tray Quantity	Splice Protector Type	Connector Type	Basket Size	Article-No.
<b>FDNCT-ABBCDW1-LJ</b>	312	222	561	Cablelok, Heatshrink	Hellipse NZDF SE-A	15	3A	LC	Small	857-00795
<b>FDNCT-ABBCDW1-AJ</b>	312	222	561	Cablelok, Heatshrink	Hellipse NZDF SE-A	15	3A	LC-APC	Small	857-00797
<b>FDNCT-ABBCDW1-SJ</b>	312	222	561	Cablelok, Heatshrink	Hellipse NZDF SE-A	15	3A	SC	Small	857-00799
<b>FDNCT-ABBCDW1-TJ</b>	312	222	561	Cablelok, Heatshrink	Hellipse NZDF SE-A	15	3A	SC-APC	Small	857-00801

Products listed are for standard configurations, other configurations and splice insert types are available - see Page 176

#### Content of Set/Kit

- FDN Base
- AB-Length Cover (Dome)
- Quick Release Clamp
- Sealing 'O' Ring
- Fibre Storage Basket
- Connector Plate
- LC Duplex or SC Simplex Adaptors
- 15 NZDF SE-A Trays
- Fibre Storage Basket
- Tray Support Frame
- Anchor Fixing Kit (3)
- Tray Tool
- Hook and Loop Tray Securing Strap
- Transportation Tubing
- Tubefix – Tube to Tray Securing Blocks
- Hook and Loop Management Ties
- Isopropyl Alcohol Wipes
- Desiccant
- Installation Guide



### FDN Connectorised Closure

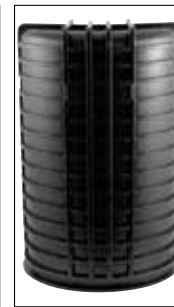
#### AB Length with 24 LC/SC Adaptors

#### Features and Benefits

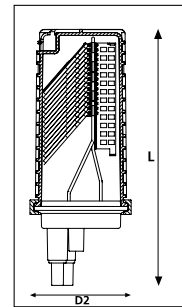
- Maximum 180 fibre splice capacity
- 58 round ports and 1 oval port
- Hellipse NZDF SE-A Trays
- LC Duplex or SC Simplex adaptors
- Maximum 12 splices per tray without double stacking
- Splitter accommodation
- Cablelok compatible for all port sizes
- Quick release cover
- Optional flash test valve and/or grounding feed-through



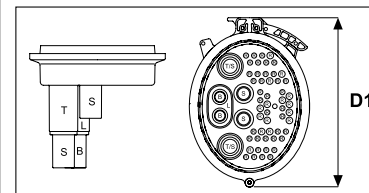
FDN 59 Port AB-Length Connectorised Closure with 48 LC or 24 SC ports



FDN AB-Length Closure Cover



FDN 59 Port AB-Length Connectorised Closure



FDN 59 Port Base Port Configuration

#### Technical Description

The FDN AB Length closure is supplied with a Polypropylene base. The base configuration of 58 round ports and 1 oval port covers a cable diameter range of 1.7 – 29.0mm when using Cablelok mechanical seals and 6.0 – 35.0mm when using heatshrink.

The mounting system is manufactured from Grade 304 stainless steel and can accommodate up to 15 Hellipse NZDF SE-A trays with a

maximum of 24 LC Duplex or 24 SC Simplex adaptors mounted in the connector plate for a maximum of 48 LC or 24 SC connectors.

The connectorised closure and the position of the mounting system allow for ease of access and traceability of the fibre on to the trays.

The trays are white which makes it easy to see the colour of the fibre elements as they are routed through the fibre management system.

TYPE	Width D1 (mm)	Width D2 (mm)	Length L (mm)	Base Type	Tray Type	Tray Quantity	Splice Protector Type	Connector Type	Article-No.
FDNCT-ABXCDW1-LJ	312	222	561	Cablelok, Heatshrink	Hellipse NZDF SE-A	15	3A	LC	857-00794
FDNCT-ABXCDW1-AJ	312	222	561	Cablelok, Heatshrink	Hellipse NZDF SE-A	15	3A	LC-APC	857-00796
FDNCT-ABXCDW1-SJ	312	222	561	Cablelok, Heatshrink	Hellipse NZDF SE-A	15	3A	SC	857-00798
FDNCT-ABXCDW1-TJ	312	222	561	Cablelok, Heatshrink	Hellipse NZDF SE-A	15	3A	SC-APC	857-00800

Products listed are for standard configurations, other configurations and splice insert types are available - see Page 176

#### Content of Set/Kit

- |                          |                         |                                 |                           |
|--------------------------|-------------------------|---------------------------------|---------------------------|
| • FDN Base               | • Simplex Adaptors      | • Securing Strap                | • Isopropyl Alcohol Wipes |
| • AB-Length Cover (Dome) | • 15 NZDF SE-A Trays    | • Transportation Tubing         | • Desiccant               |
| • Quick Release Clamp    | • Tray Support Frame    | • Tubefix – Tube to Tray        | • Installation Guide      |
| • Sealing 'O' Ring       | • Anchor Fixing Kit (3) | • Securing Blocks               |                           |
| • Connector Plate        | • Tray Tool             | • Hook and Loop Management Ties |                           |
| • LC Duplex or SC        | • Hook and Loop Tray    |                                 |                           |



## FRBU Connectorised Closure

### B Length with 24 SC Simplex Adaptors

#### Features and Benefits

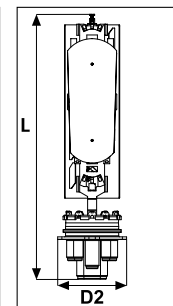
- Maximum 72 fibre splice capacity
- 10 round ports and 1 oval port
- Accommodates Hellapon Medium side hinged trays
- SC Simplex adaptors
- Maximum 24 splices per tray (double stacked)
- Splitter accommodation
- Cablelok compatible for all port sizes
- Quick release cover
- Optional flash test valve and/or grounding feed-through



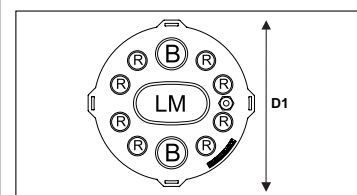
FRBU 11 Port B-Length  
Connectorised Closure



FRBU B-Length  
Closure Cover



FRBU B-Length 11  
Port Connectorised  
Closure



FRBU 11 Port Base Configuration

#### Technical Description

The FRBU 11 Port B Length closure is supplied with a Polypropylene base. The base configuration of 10 round ports and 1 oval port covers a cable diameter range of 1.7 – 16.5mm when using Cablelok mechanical seals and 6.0 – 24.0mm when using heatshrink.

The mounting system is manufactured from Grade 304 stainless steel and can accommodate a maximum of 3 Hellapon Medium side hinged trays with a maximum of 24 SC Simplex adaptors mounted in the

connector plate for a maximum of 24 SC Connectors.

The Connectorised closure and the position of the mounting system allow for ease of access and traceability of the fibre on to the trays.

The trays are white which makes it easy to see the colour of the fibre elements as they are routed through the fibre management system and in to the trays.

TYPE	Width D1 (mm)	Width D2 (mm)	Length L (mm)	Base Type	Tray Type	Tray Quantity	Splice Protector Type	Connector Type	Article-No.
FRBCT-BXXEC2X-TF	130	130	505	Cablelok, Heatshrink	Hellapon Medium	2	3A	SC-APC	857-00910
FRBCT-BXXEC3X-TF	130	130	505	Cablelok, Heatshrink	Hellapon Medium	3	3A	SC-APC	857-00961

Products listed are for standard configurations, other configurations and splice insert types are available - see Page 176

#### Content of Set/Kit

- FRBU 11 Port Base
- B-Length Cover (Dome)
- Quick Release Clamp
- Sealing 'O' Ring
- Connector Plate
- SC Simplex Adaptors
- Hellapon Medium Trays
- Tray Support Frame
- Anchor Fixing Kit (2)
- Tray Tool
- Transportation Tubing
- Hook and Loop Management Ties
- Cable Ties
- Isopropyl Alcohol Wipes
- Desiccant
- Installation Guide
- Marker Kit
  - Red Marker 1 – 12
  - Green Marker 1 – 12



### FST Connectorised Closure

#### 13 Port with 2 SC Duplex Adaptors

#### Features and Benefits

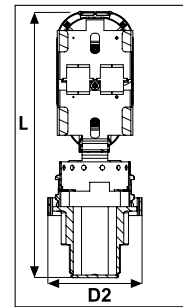
- Maximum 24 fibre splice capacity
- 12 round ports and 1 oval port
- SC Duplex adaptors
- Maximum 12 3A splices per tray
- Splitter accommodation
- Cablelok compatible for all port sizes
- Quick release cover



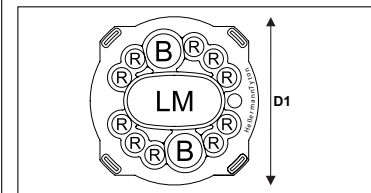
FST 13 Port Connectorised Closure



FST / MRBU Closure Cover



FST A-Length 13 Port Connectorised Closure



FST 13 Port Base Configuration

#### Technical Description

The FST 13 port closure is supplied with a Polypropylene base. The base configuration of 12 round ports and 1 oval port covers a cable diameter range of 1.7 – 16.5mm when using Cablelok mechanical seals.

The mounting system is manufactured from Grade 304 stainless steel and can accommodate a maximum of 2 Hellapon Small trays with a maximum of 2 SC duplex adaptors mounted in the connector plate for a

maximum of 4 SC connectors.

The Connectorised closure and the position of the mounting system allow for ease of access and traceability of the fibre elements on to the trays.

The trays are white which makes it easy to see the colour of the fibre elements as they are routed through the fibre management system and on to the trays.

TYPE	Width D1 (mm)	Width D2 (mm)	Length L (mm)	Base Type	Tray Type	Tray Quantity	Splice Protector Type	Connector Type	Article-No.
FSTCT-AXXTA11-TF	110	110	310	Cablelok, Heatshrink	Hellapon Small	1	3A	SC-APC	857-00970
FSTCT-AXXTA21-TF	110	110	310	Cablelok, Heatshrink	Hellapon Small	2	3A	SC-APC	857-00969

Products listed are for standard configurations, other configurations and splice insert types are available - see Page 176

#### Content of Set/Kit

- FST 13 Port Base
- Anchor Ring
- A-Length Cover (Dome)
- Quick Release Clamp
- Sealing 'O' Ring
- Connector Plate
- SC Duplex Connectors
- Hellapon Small Trays
- Tray Support Frame
- Anchor Fixing Kit (2)
- Hook and Loop Securing Strap (3 tray version only)
- Transportation Tubing
- Isopropyl Alcohol Wipes
- Desiccant
- Installation Guide
- Maker Kit
  - Red Marker 1 – 12
  - Green Marker 1 – 12

## LightGuide 2 - Fibre Raceway



Ducting



Fittings



Fibre Side  
Access Module



Junction Kits



Mounting and  
Support Kits



**LightGuide 2 from HellermannTyton** is a flexible fibre optic ducting system designed to protect and route fibre optic cable in the data centre, central office, head end and PoP.

**The HellermannTyton LightGuide 2 system offers the following features and benefits:**

- Quick and easy to assemble
- No specialist installation equipment required
- Ducting and fittings sold with lids as complete item
- Protects fibre optic cable and maintains optimum bend radius
- Full solution available to suit any sized installation

For more information  
download our  
LightGuide 2 Catalogue

[htdata.co.uk](http://htdata.co.uk)

Stay in touch with us!

